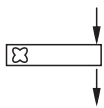
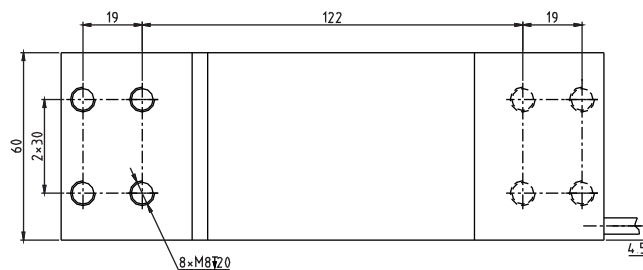
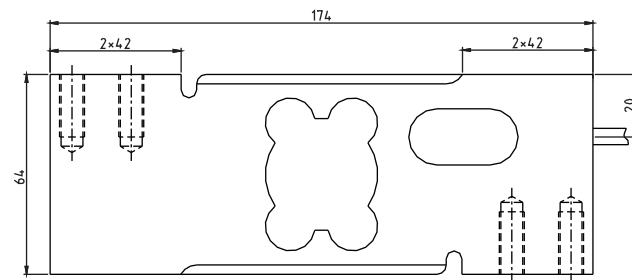
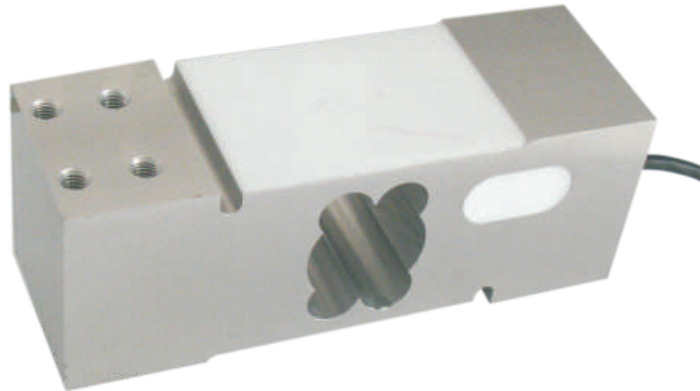




**UDA Load cell**

**UDA**



Platform scale, all kinds of compression testing devices

**TECHNICAL PARAMETER**

OAP version 4Wires:Exc+(Blue);Exc-(Black);Sig+(White);Sig-(Red)

Rated capacities(Emax)	50,60,75,100,150,200,250,300, 350,500,600,635,750,800kg;1t	Temperature range, compensated	-10°C~+40°C
Sensitivity	2.0 ± 0.2mV/V	Temperature range, operating	-20°C~+50°C
Accuracy class	OIML C3	Maximum safe overload	150%Emax
Creep error (30min)	± 166ppm	Ultimate overload	300%Emax
Zero balance	± 3%Emax	Excitation, recommended	10V DC
TC ZERO	± 17.5ppm/°C	Excitation, maximum	15V DC
TC SPAN	+20°C~+40°C, ± 17.5ppm/°C -10°C~+20°C, ± 11.67ppm/°C	Protection class	IP65
Input resistance	404 ± 15Ω	Construction	Aluminium
Output resistance	350 ± 3Ω	Cable	Length: 1.8m Diameter: φ 5mm
Insulation resistance	≥ 2000 MΩ (50V DC)	Installation torque, recommended	25N · m
Max platform size	600 × 600mm		