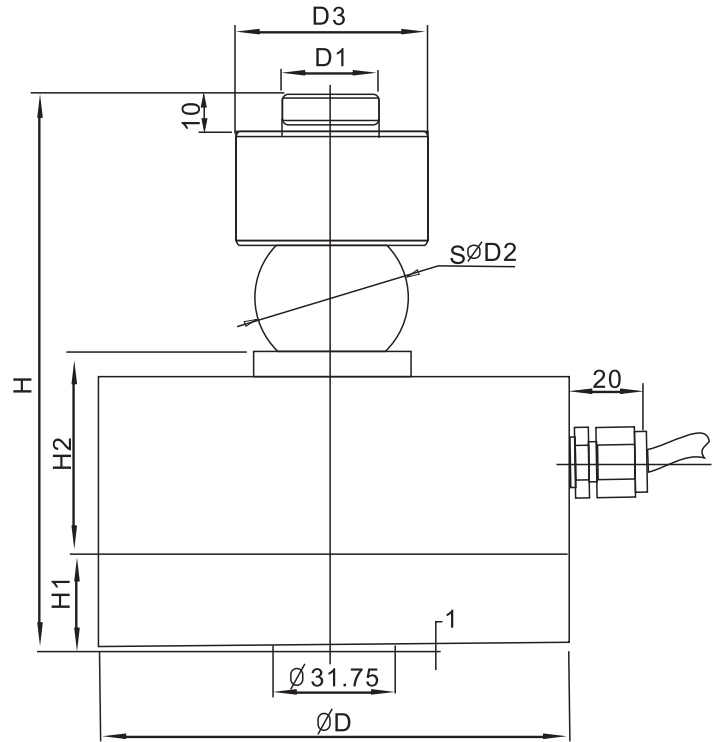




LFSB-A Loadcell

LFSB-A



Rated Load (klb)	D	H1	H2	H	D1	D2	D3
5~10	104.6	19.2	45.3	100	21.5	19.5	37
25,50,60	122	25	54	147	25	40	50
100	138	30	57	155	25	40	50



Axle-load scale, warehouse scale testing equipment

TECHNICAL PARAMETER | OAP version 4Wires:Exc+(Blue);Exc-(Black);Sig+(White);Sig-(Red)

Rated capacities(Emax)	5~10,25,50,60,100klb	Temperature range, compensated	-10°C~+40°C
Sensitivity	4.0±0.006mV/V	Temperature range, operating	-30~+70°C
Total error	±0.05%F.S;±0.1%F.S (100klb)	Maximum safe overload	100%F.S
Creep error (30min)	±0.03%F.S	Ultimate overload	120%F.S
Zero balance	±1%F.S	Excitation,recommended	10~12V DC
TC ZERO	±0.02%F.S/10°C	Excitation,maximum	15V DC
TC SPAN	±0.02%F.S/10°C	Protection class	IP67
Input resistance	400±20Ω	Construction	Alloy Steel
Output resistance	352±3Ω	Cable	Length:12m
Insulation resistance	≥5000MΩ		Diameter: φ 6mm